

Ecolibrium

5% openness

Ecolibrium Sunscreen

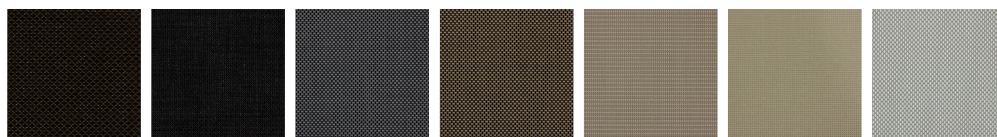
Features

Ecolibrium is a 2x2 sunscreen manufactured using bio based plasticisers, rather than fossil fuel based plasticisers. This type of plasticiser does not detract from the sunscreen's appearance or performance, and provides a sustainable green alternative to traditional sunscreens, without the PVC smell.

Care Instructions

Fabric should be regularly dusted / vacuumed as appropriate. May be wiped with warm water and mild detergent.

Colour Options



Charcoal
Bronze

Charcoal

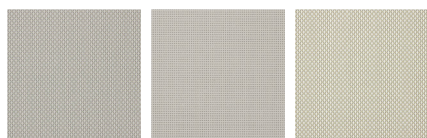
Charcoal
Grey

Charcoal
Gold

Sandstone

Linen

White
Grey



White
Stone

White

White
Linen



Fire retardant
AS1530 part 2



Luxaflex[®]

Ecolibrium 5% openness Sunscreen

Technical information

Fabric Density	Semi Transparent
Composition	25% Polyester, 75% Vinyl on Polyester (over 50% of compound components are derived from crop based feed stocks and minerals. Over 2/3 of total compound is derived from non fossil fuel based feed stocks).
Weight	488gsm
Thickness	0.61mm
Width	3200mm
Flame Retardancy	Independently tested to AS1530 part 2. Flammability Index: 4 Range [0-20]
Weave	Basketweave
Organic emissions (VOC)	Does not exceed the maximum VOC (Volatile Organic Compound) criteria specified by the Green Building Council of Australia (IEQ-11).
Product Options	Roller Blinds

Fabric colour	Charcoal	White	White Linen	White Grey	White Stone
---------------	----------	-------	-------------	------------	-------------

Optical/Light properties

	Charcoal	White	White Linen	White Grey	White Stone
Visual Light Transmittance	7%	11%	13%	11%	12%
Openness factor (nominal)	5%	5%	5%	5%	5%

Heat/Solar properties

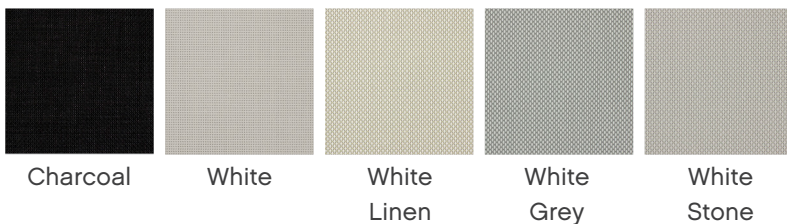
	Charcoal	White	White Linen	White Grey	White Stone
Solar transmittance	5%	12%	13%	10%	12%
Solar reflectance	3%	74%	62%	49%	61%
Solar absorbance	92%	14%	25%	41%	27%

G-value / Solar heat gain coefficient

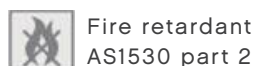
	Charcoal	White	White Linen	White Grey	White Stone
Glazing Type - Single 3mm Clear Glass	0.74	0.26	0.35	0.44	0.36

For more information please contact New Zealand Window Shades on 0800 223 224 or <http://www.luxaflex.co.nz/contact-us>

Colour options presented with data specifications



New Zealand Window Shades Ltd.
 PO Box 12 785, Penrose, Auckland 1642, New Zealand
 Luxaflex® is a division of New Zealand Window Shades Ltd.
 ©Copyright 2019 New Zealand Window Shades Ltd.



Ecolibrium 5% openness Sunscreen

Technical information

Fabric Density	Semi Transparent
Composition	25% Polyester, 75% Vinyl on Polyester (over 50% of compound components are derived from crop based feed stocks and minerals. Over 2/3 of total compound is derived from non fossil fuel based feed stocks).
Weight	488gsm
Thickness	0.61mm
Width	3200mm
Flame Retardancy	Independently tested to AS1530 part 2. Flammability Index: 4 Range [0-20]
Weave	Basketweave
Organic emissions (VOC)	Does not exceed the maximum VOC (Volatile Organic Compound) criteria specified by the Green Building Council of Australia (IEQ-11).
Product Options	Roller Blinds

Fabric colour	Linen	Sandstone	Charcoal Gold	Charcoal Grey	Charcoal Bronze
---------------	-------	-----------	---------------	---------------	-----------------

Optical/Light properties

	Linen	Sandstone	Charcoal Gold	Charcoal Grey	Charcoal Bronze
Visual Light Transmittance	11%	9%	9%	10%	9%
Openness factor (nominal)	5%	5%	5%	5%	5%

Heat/Solar properties

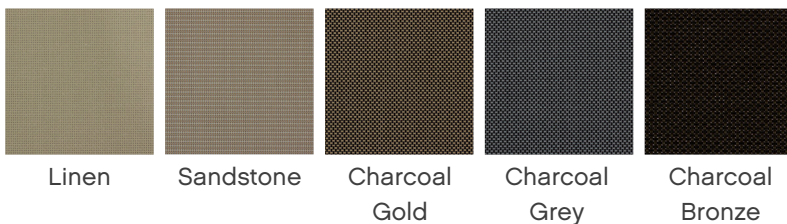
	Linen	Sandstone	Charcoal Gold	Charcoal Grey	Charcoal Bronze
Solar transmittance	10%	8%	6%	7%	7%
Solar reflectance	47%	40%	18%	10%	5%
Solar absorbance	43%	52%	76%	83%	88%

G-value / Solar heat gain coefficient

	Linen	Sandstone	Charcoal Gold	Charcoal Grey	Charcoal Bronze
Glazing Type - Single 3mm Clear Glass	0.44	0.36	0.61	0.67	0.7

For more information please contact New Zealand Window Shades on 0800 223 224 or <http://www.luxaflex.co.nz/contact-us>

Colour options presented with data specifications



New Zealand Window Shades Ltd.
 PO Box 12 785, Penrose, Auckland 1642, New Zealand
 Luxaflex® is a division of New Zealand Window Shades Ltd.
 ©Copyright 2019 New Zealand Window Shades Ltd.

